

Light is OSRAM



DALI PRO 2 IoT “Remote Access”

Quick Start Guide

Please read this guide in full before using our Remote Access service!

Table of Contents

Introduction	page 01
Web Application Remote Access	page 02
Enable Remote Access Feature	page 04
Activate Remote Access Service	page 05
Download File	page 07
Change File	page 07
Upload File	page 09
Summary	page 11
Glossary	page 11

Introduction

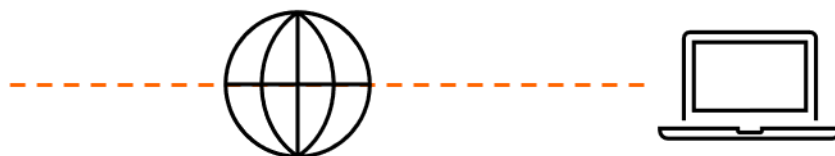
Remote Access

is all about making adaptations to a Lighting System without the need to visit the site.

Adaptations are made by changing the configuration file as stored onto the controller. In general, the configuration file is created during commissioning while being on-site.

To make adaptations to this configuration while not physically on-site, you can use our OSRAM Web Application Remote Access to change the configuration file from remote.

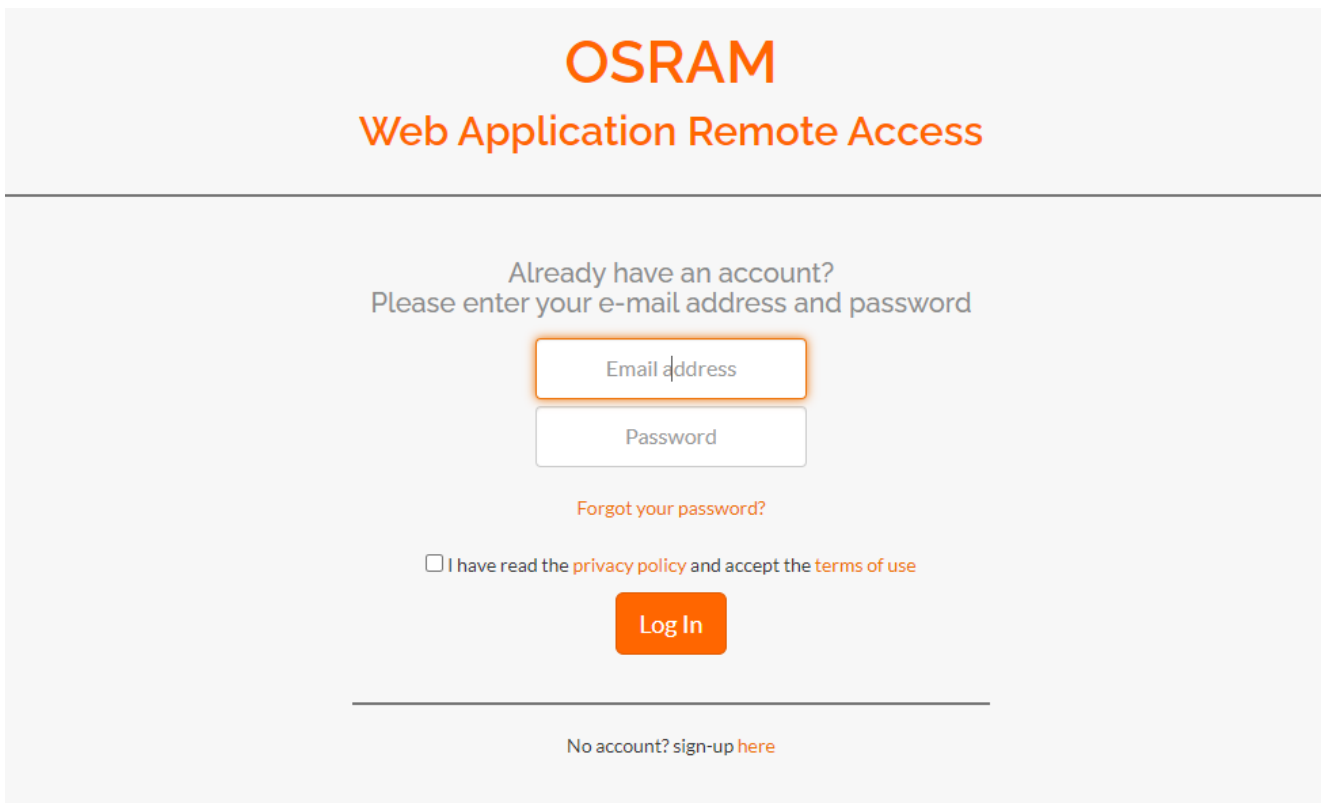
The Web Application Remote Access allows you to download the configuration file from the controller, make changes via the PC TOOL and then upload the file back onto the controller.



Web Application Remote Access

Use a web-browser and type the following URL: <https://remote-access.dalipro.io>

The Log In screen will appear:



The screenshot shows the login interface for the OSRAM Web Application Remote Access. At the top, the text "OSRAM" is displayed in a large, bold, orange font, followed by "Web Application Remote Access" in a smaller orange font. Below this, a horizontal line separates the header from the main content. The main content area is light gray and contains the following elements: the text "Already have an account? Please enter your e-mail address and password" in a dark gray font; two input fields, one labeled "Email address" and one labeled "Password", both with orange borders; a link "Forgot your password?" in orange text; a checkbox with the text "I have read the [privacy policy](#) and accept the [terms of use](#)" in dark gray; an orange "Log In" button; and a horizontal line at the bottom with the text "No account? sign-up [here](#)" in dark gray.

If you do not have an account yet, please sign-up and follow the instructions.


If you already have an account, log in with your e-mail address and password and you will be re-directed to the start page.

The start page will give you two options:

- 1) Leave the Web Application by the logout button [upper-right corner]
- 2) Continue with the Web Application by the “Devices” [upper-left corner]

Devices

DALIPro Remote Web Application for downloading / uploading configuration files.



POWER ONLINE PLUG & PLAY ERROR WIFI MODE

OSRAM DALI PRO 2 IoT

SSID: DALI PRO 2 IoT - 12345678
Password: A6f8hwe175Z9
Serial No.: 12345678

IPSS: 192.168.1.10
Input: 220-240V-50/60Hz
Output Power: 25W

LINK ACT LAN DALI A B SELECT RESET ON/OFF/DIM

DA DA A A B B NC NC N L-

Designed and engineered in Germany
Made in Hungary

Harry Linssen

To continue, please click on the “Devices” in the left-upper corner. Next, you will see a list of DALI PRO 2 IoT’s which are enabled for remote access feature. DALI PRO 2 IoT’s Devices are identified by their Serial Number. [Header: SN]

Devices

Search...

SN	Status	Download / Upload
86000011	Online Last connection: 26/01/2022 (11:15:91)	Download File Upload File
860000CA	Online Last connection: 26/01/2022 (11:15:85)	Download File Upload File

Refresh data

Harry Linssen

If you do not see a list of “Devices” it means that you have not linked controllers to your account yet. To link a particular controller to your account, you must enable the remote access feature and activate the remote-access service on the DALI PRO 2 IoT controller.

Enable remote-access feature and activate the service can be done via the built-in WebUI.

Enable Remote Access feature

To enable the remote-access feature you will need a code or “key”. [= string of characters]
An example of a key: C2v4u/IAid5chIoL4FW667u8y+GajrAj6OphyAi0M/D4OFJblUDMs82QrMZNg

You can order a key by sending an e-mail to: support-ds@osram.com
Please provide your OSRAM Customer Number and the serial number(s) of the controller(s)
Also, clearly state that you request a key for “remote-access”.

Once you have received the key, you must input this key into the controller locally.

Log on to the controller and follow Menu>System Settings>Advanced

Then scroll down to Feature Keys:

Feature Keys ⓘ

Apply Key

Feature	Enabled
Emergency Lighting	No
Cloud API	Yes
Remote Access	No

Copy the key to the input field and click on the “Apply Key” to enable the “Feature”

A pop-up screen [upper-right corner] will appear for a short moment with the information: “Feature Key applied successfully”

Reload the page, go back to Feature Keys. It will show that Remote Access is now enabled.

Feature Keys

Apply Key

Feature	Enabled
Emergency Lighting	No
Cloud API	Yes
Remote Access	Yes

Activate Remote Access Service

In the main menu of the WebUI, click on Remote Access and see Activation status.

Remote Access

Activation status

The Remote Access service is currently NOT active on this device.
Please supply an email address already registered at dalipro.io

Activate service

Create an account

If you do not have an account for the Web Application Remote Access, you can create one.

If you already have an account, fill in your registered e-mail address in the input field and click on “Activate Service”.

Remote Access

Activation status ⓘ

The Remote Access service is currently active on this device.

Administrator : **John Doe (j.doe@company.com)**

[Deactivate service](#) [Go to account page](#)

The “Go to account page” will link you directly to your Web Application Remote Access Please Note: click the “Refresh Data” button to make sure the status is correctly displayed.

OSRAM Logout

Devices

Harry Linssen

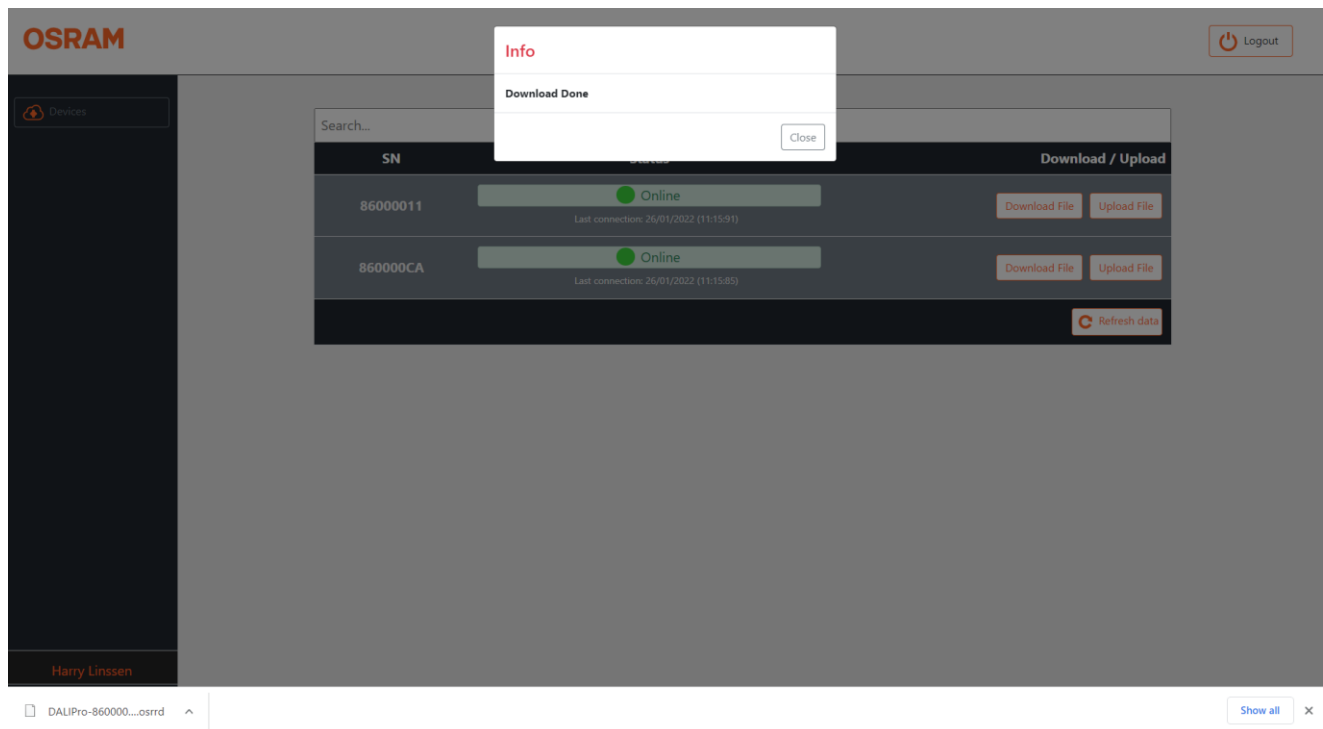
Search...

SN	Status	Download / Upload
86000011	● Online <small>Last connection: 26/01/2022 (11:15:91)</small>	Download File Upload File
860000CA	● Online <small>Last connection: 26/01/2022 (11:15:85)</small>	Download File Upload File

[Refresh data](#)

Download File

Click on the button “Download” and a status file will be downloaded to your computer under DaliPro-<serialnumber.osrrd. For example: DALIPro-86000011.osrrd

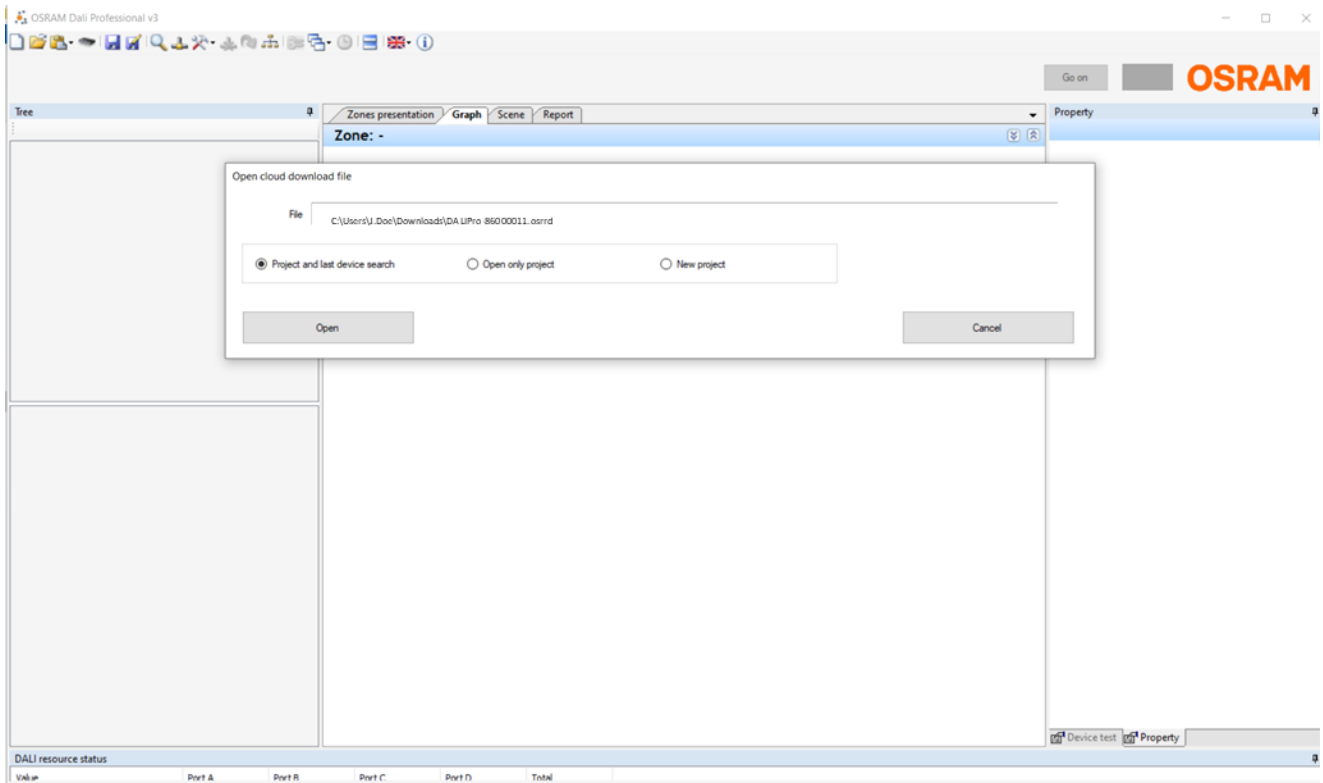


Open this file with your PC TOOL. Note: **Remote Access available as of version 3.1.10.**

Change File


Start the PC TOOL program and open the file. [for example, DALIPro-86000011.osrrd]

Select “Project and last device search” and click on the button “Open”

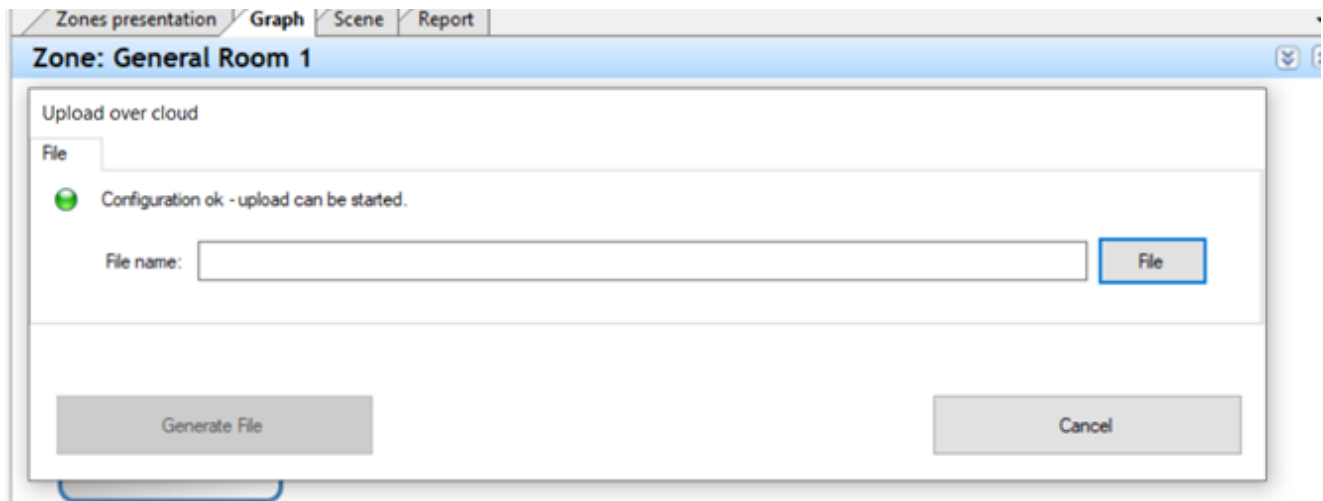


A pop-up window with information will appear. Close this pop-up window.

Make changes to the configuration as you normally do with the PC TOOL.

Use the upload button  to save a configuration file on your computer.

After saving, a pop-up window appears called "Upload over cloud"



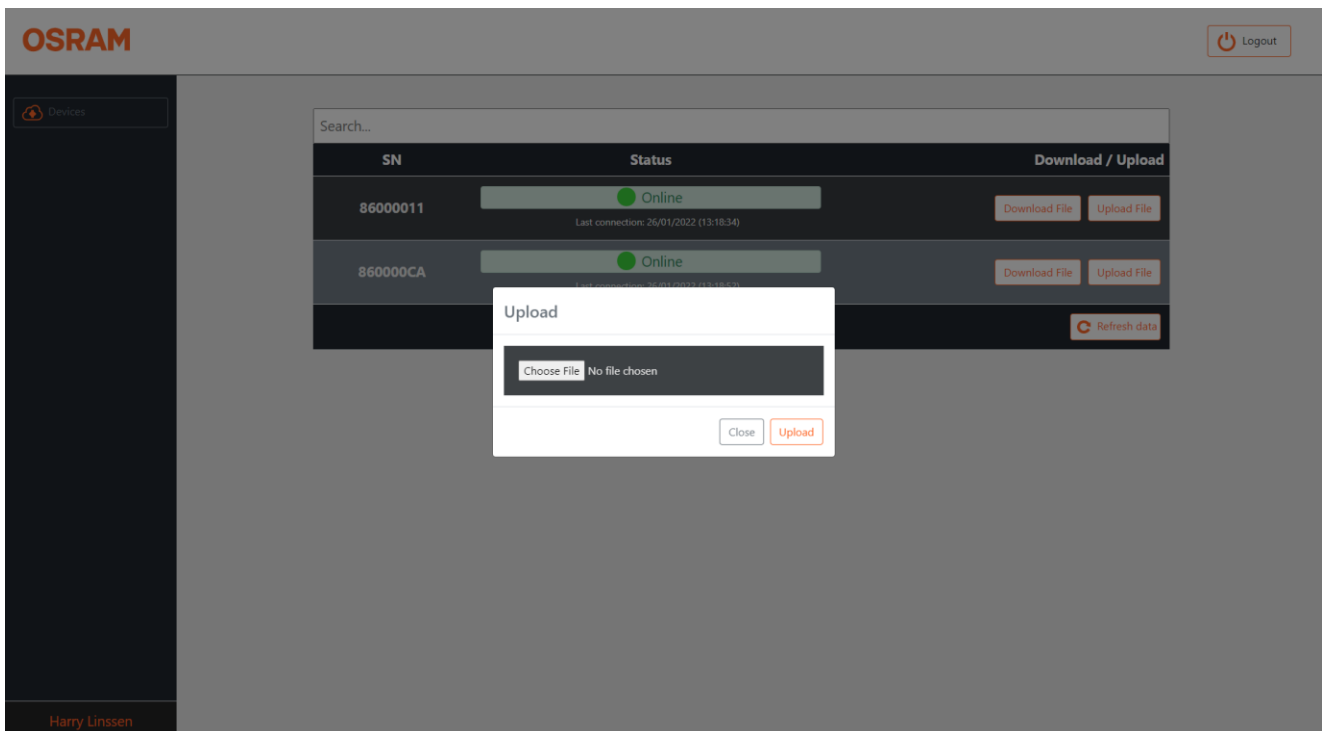
Assign a filename. [for example: Upload-86000011] and click on the button “Generate File”

A file is saved to your computer which can be uploaded to the controller via remote access.

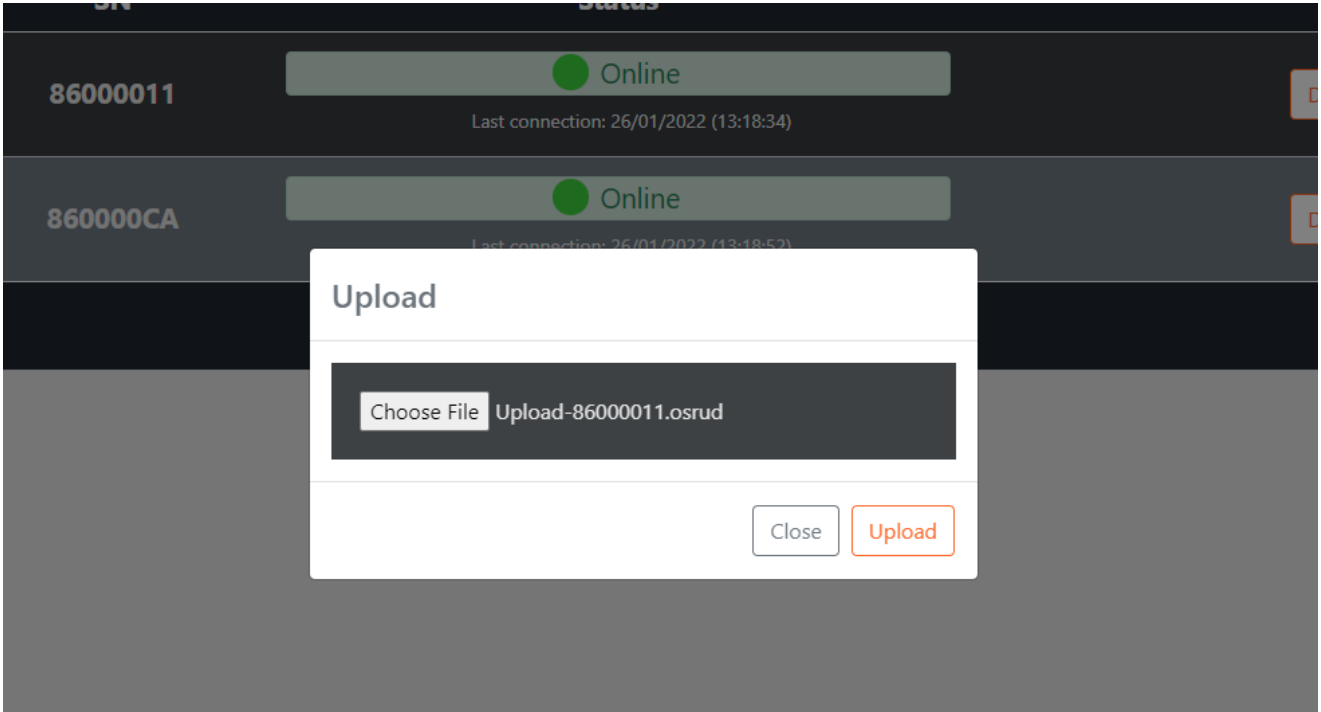
Close the PC TOOL and return to the Web Application Remote Access.

Upload File

Click on the button “Upload File”. [Note: pay attention to select the correct controller]

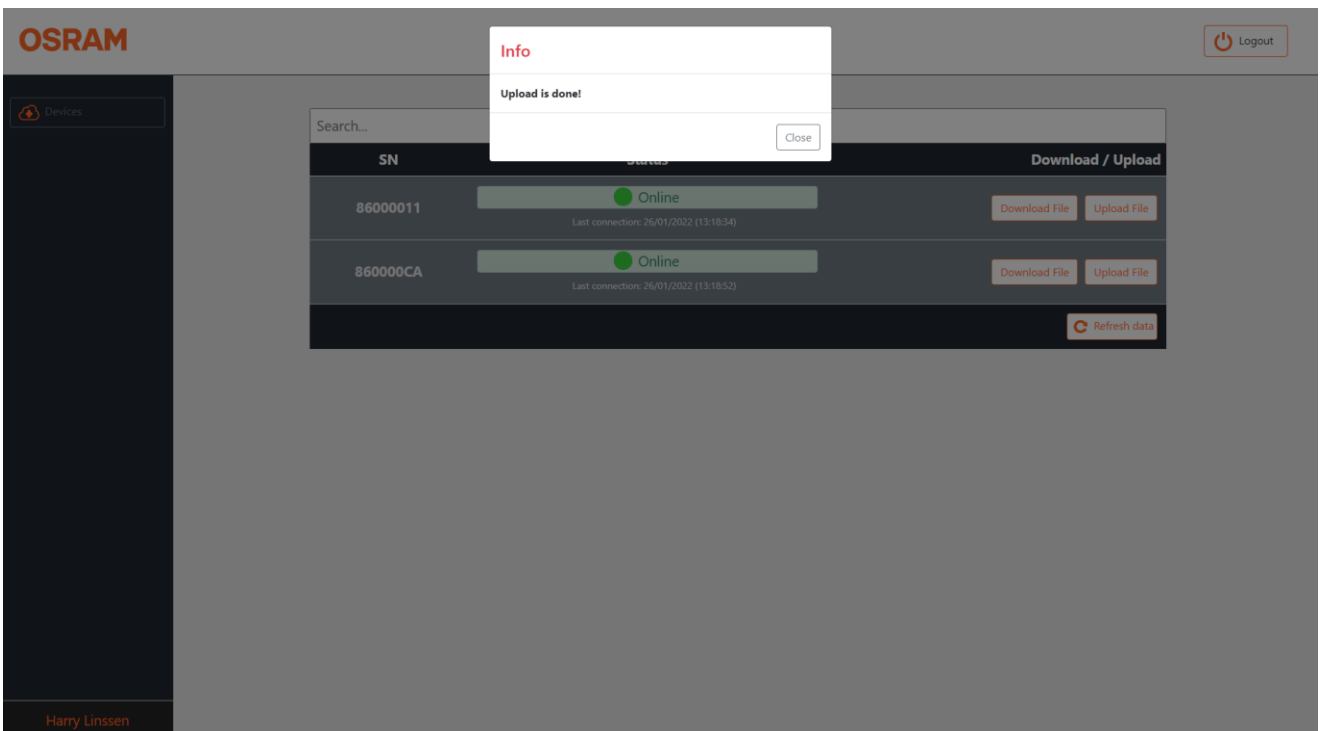


Select the file you want to upload and click on the button “Upload”



A pop-up window will confirm a successful uploading of the file.

Close the Web Application. “YOU ARE DONE“



Summary

Four steps to set-up “Remote Access” [these steps need to be done only once]

- Step 1: Create an account
- Step 2: Request a key
- Step 3: Enable Remote Access feature
- Step 4: Activate Remote Access service

Five Steps to use “Remote Access”

- Step 1: Log in
- Step 2: Download File
- Step 3: Change File
- Step 4: Upload File
- Step 5: Log Out

Glossary

Activation Status	Information on whether the remote access service is activated or not
Commissioning	Initial set up of the lighting system i.e. programming and mapping of devices
Configuration File	Program stored in the memory of the DALI PRO 2 IoT controller
Devices	A component of a lighting system, controllers, luminaires, buttons or sensors
Download File	An information file downloaded from the controller via remote access
Feature Key	a special code (string of characters) to enable features like remote access
File	various files such as Configuration file, Status file, Info file
Key	see feature key
Lighting System	Lighting based on DALI PRO 2 IoT controller, luminaires, buttons and sensors
PC TOOL	Windows based program to support commissioning and programming
Remote Access Service	see Web Application Remote Access
Serial Number	Unique number to identify DALI PRO 2 IoT controllers
Service	see Web Application Remote Access
Upload File	An information file to be uploaded to the controller via remote access
Web Application Remote Access	A service from OSRAM to download and upload files remotely
Web-browser	Commercial web-browser such as Chrome, Safari, etc.
WebUI	A Graphical User interface based on a built-in web-browser