

## Light is OSRAM



# Product

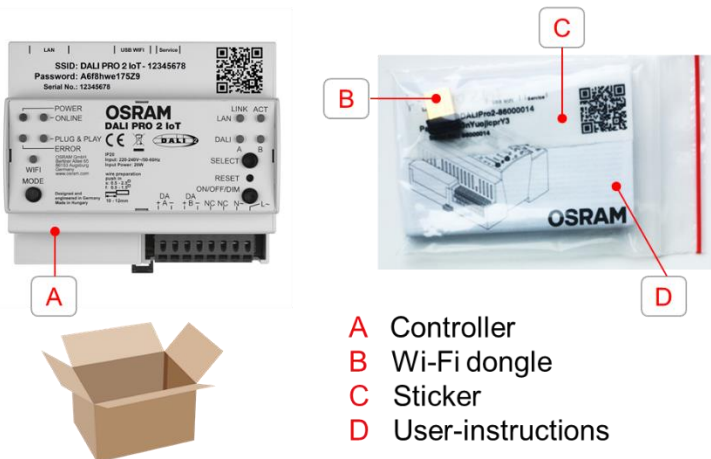
# DALI PRO 2 IoT

EAN-010:4062172114189

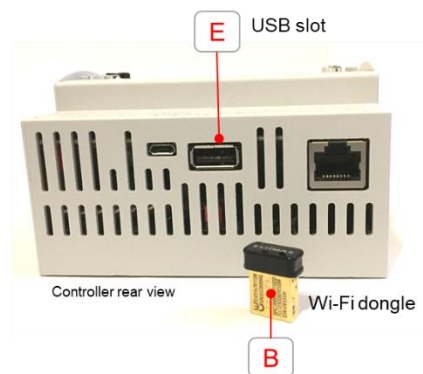
# Quick Start Guide

# Commissioning App

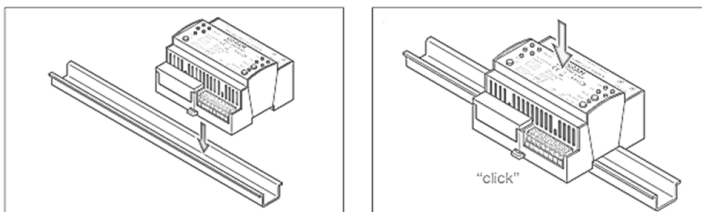
**Step 1:**  
**check content of the packaging box**



**Step 2:**  
insert the Wi-Fi dongle in the USB slot



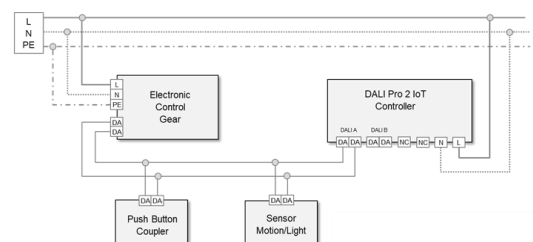
### Step 3: mount the controller on a DIN rail



The DALI PRO 2 IoT is to be mounted on a 35 mm DIN rail inside a switch cabinet as per DIN 43880

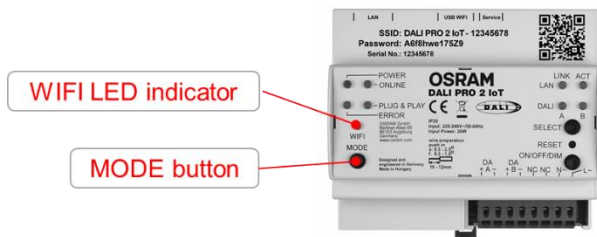
### Step 4: connect the DALI line(s) and Mains

after powering up, wait ⌚ 5 minutes before continuing to the next step



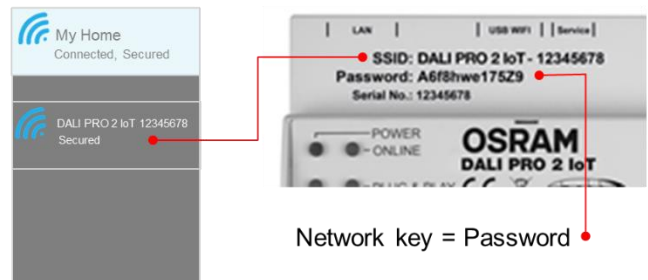
### Step 5: activate Wi-Fi connection on controller

Press the MODE button ( LED starts flashing )  
Within 10 seconds, the LED will light up continuously, indicating that the WiFi is active



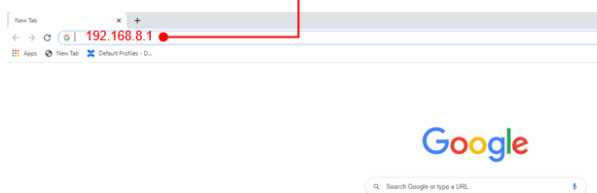
### Step 6: Connect to the Wi-Fi network of the controller

On PC/Smart-device, find the DALI PRO WiFi network.  
Connect to the network and when asked for provide the network key [ = password as printed on the controller ]



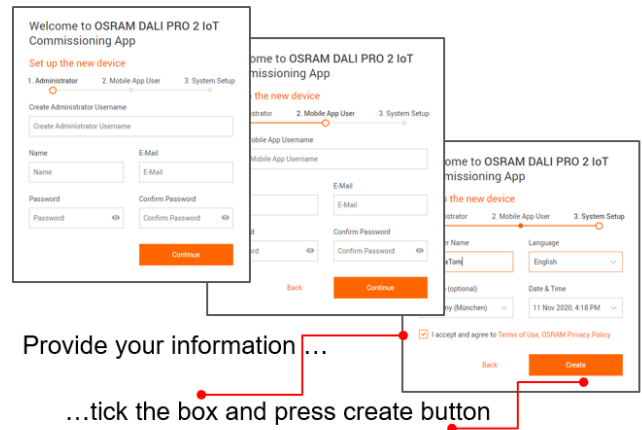
### Step 7: Start the Commissioning App

On PC/Smart-device, open the web-browser and type in the URL bar the IP-address " 192.168.8.1 "



Press "enter" and the browser will open the Commissioning App

### Step 8: Registration process (first time use of the App)



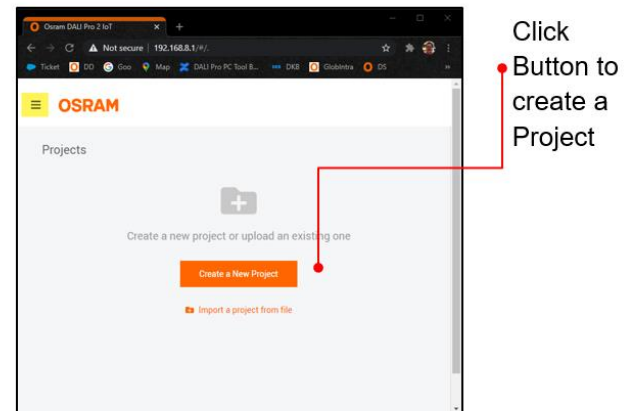
### Step 9: Login to the Commissioning App

Fill in your **Username** and your **Password**

Select a **language**

Click button

### Step 10: Start using the App to create your projects

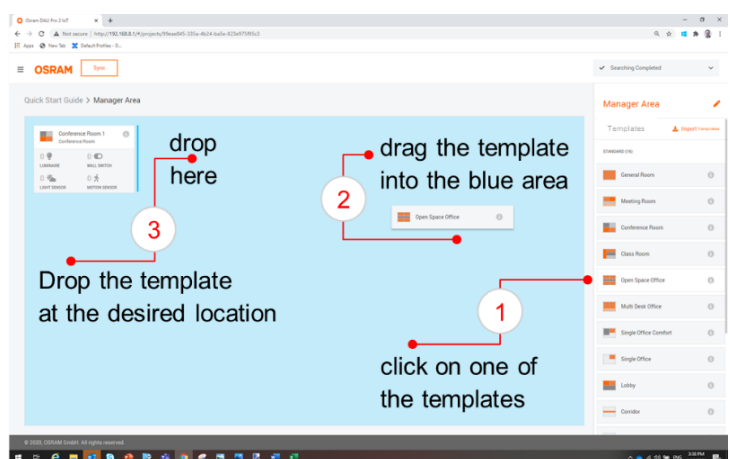


### Step 11: Name your Project

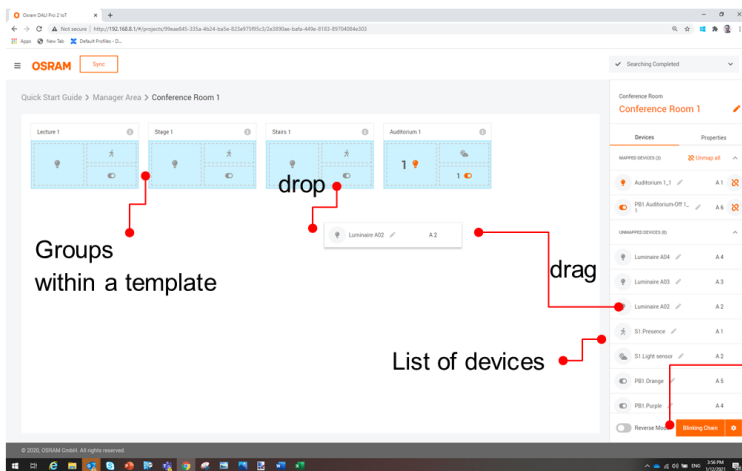
Name your project

tick the box

### Step 12: Drag and Drop “Templates” into Manager Area



### Step 13: Drag and Drop Devices (luminaires, sensors, )



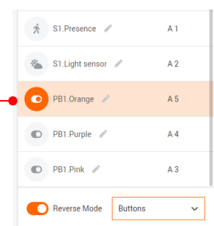
**Click** on any of the templates in Manager Area  
Now, groups within the template are shown.  
(e.g. Conference Room with four groups)

Instead of the list of templates,  
the screen will show a list of DALI devices  
(luminaires, sensors, pushbutton couplers, ..)

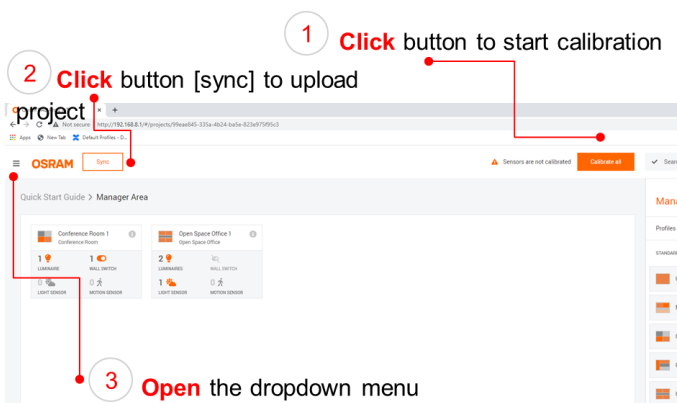
**Drag and Drop** devices into the groups

Blinking chain and reverse mode allows  
you to find the relation between physical  
devices and devices in the GUI list

e.g. **click** on a physical button and this  
button will be identified in the GUI list by  
being highlighted



### Step 14: Calibrate Sensors and Upload Project to the controller



### Step 15: Log out of the controller

